

# Fraud Alert

Office of Inspector General for the U.S. Department of Labor

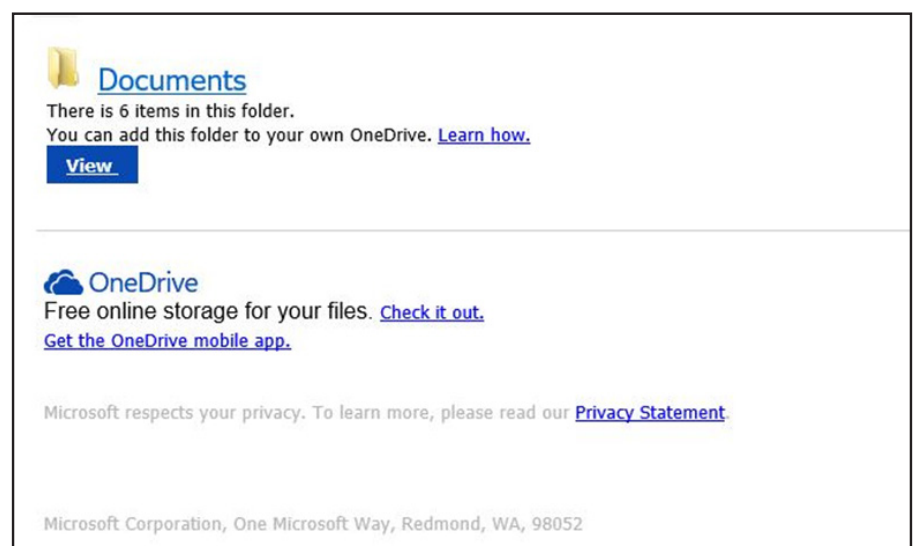


## UNEMPLOYMENT INSURANCE PHISHING FRAUD ALERT

This is a Fraud Alert from the Office of Inspector General at the U.S. Department of Labor.

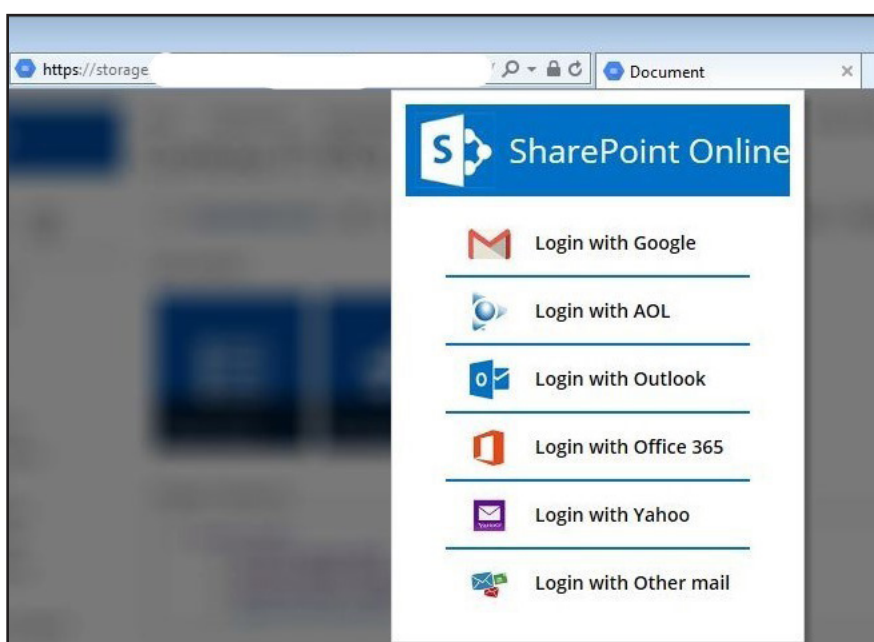
The U.S. Department of Labor Office of Inspector General has discovered a scam, where scammers are sending emails to trick you into giving them your personal information. They will steal your passwords, account numbers, and/or Social Security numbers. With this information they can gain access to your email, bank, or other accounts.

The scammers are sending emails using the names of companies or someone you know and trust. They use familiar icons, folder names, and programs to trick you into giving your personal information to them. To the right is a sample from a scam email:



If you receive an email similar to this, you can protect yourself by hovering over the link, but not clicking on it, to see where it will take you. Most scammers will use a URL shortened to hide the website's true identity. You can also call the sender to inquire if this was a legitimate email from them.

The links send the victim to a webpage which looks like a Microsoft SharePoint website. It further requires the user to sign-in using a Google, Microsoft, Apple, Yahoo!, or other user account. Here's a real world example of a phishing webpage from an email.



Once you have signed into your personal account, the scammers will have your username and password. They will have access to the files you have stored online and your contact lists. They may use this contact list to send the same scam email to your friends and family.

The scammers may use your personal information to collect unemployment insurance in your name or change your bank account number to one of their own.

**No State Workforce Agency requires you to use a secondary account to sign into their system.** Every State Workforce Agency requires you to create a user account with their website. While you may have to provide your personal email address, you will not be asked to log on with that email address.

If you would like to report an allegation of fraud involving unemployment insurance or other U.S. Department of Labor activities or programs, please contact the OIG Hotline at: <https://www.oig.dol.gov/hotline.htm> or 202-693-6999 or 1-800-347-3756.